



☎ 1300 752 956

✉ sales@australiansurfacing.com.au

🌐 www.australiansurfacing.com.au

SPORTS GRASS TECHNICAL DATA SHEET

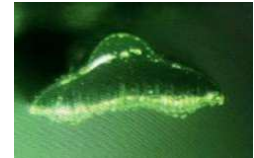


Product Specification

Product name: FIFA ELITE Color: Dark Green & FieldGreen

Application: Football/Soccer/Rugby

YARN
SHAPE



Yarn Characteristics

Yarn 1

Yarn structure: Tri-stem

Structure: Monofilament

Material: Polyethylene

Dtex/Fiber(±10%): 14100/6F(±10%):

BladeThickness: 370µm(±10%)

BladeWidth: 1.08mm(±10%)

Color fastness (grey scale): ≥4 (EN 20105-A02) 5000H (FIFA2015/World Rugby 2017/FIH 2017/EN15330-1)

Turf Characteristics

Pile Height(±5%): 50mm(±5%)

Gauge: 5/8"

Stitch Rate (±5%): 14 stitches/10cm (±10%)

Density: 8820 stitches/sqm(±10%)

Primary backing: PP+Net

Secondary backing: Black SBR Latex

Permeability: ≥3464 MM/H

Pile weight (±10%): 1420 g/sqm (±10%)

Total weight: 2600g(±10%)

Roll Width 2m/3.75m/4m

Roll length On Order

Infill Requirements

Item	Type	Infill Quantity
Stability Infill	Silica Sand	As per request of project



Warehouses: Adelaide, Melbourne, Sydney, Brisbane
Postal address: PO Box 76, Mitcham SC, Torrens Park, SA 5062

